





Pengelly Close, Cheshunt, Waltham Cross, EN7 5DD

Westwood Leber are delighted to bring to the market this well-presented three-bedroom mid-terraced family home, perfectly positioned within this quiet and sought-after cul-de-sac in West Cheshunt. This excellent property offers bright and spacious accommodation throughout, arranged over two floors and totalling approximately 845 sq ft.

The ground floor benefits from a generous 21 ft living and dining room filled with natural light, providing an ideal space for family living and entertaining. A well-proportioned kitchen sits to the rear of the property, offering access directly out to the garden.

To the first floor, the property boasts three good-size bedrooms, including two spacious double bedrooms, all well served by a modern family bathroom.

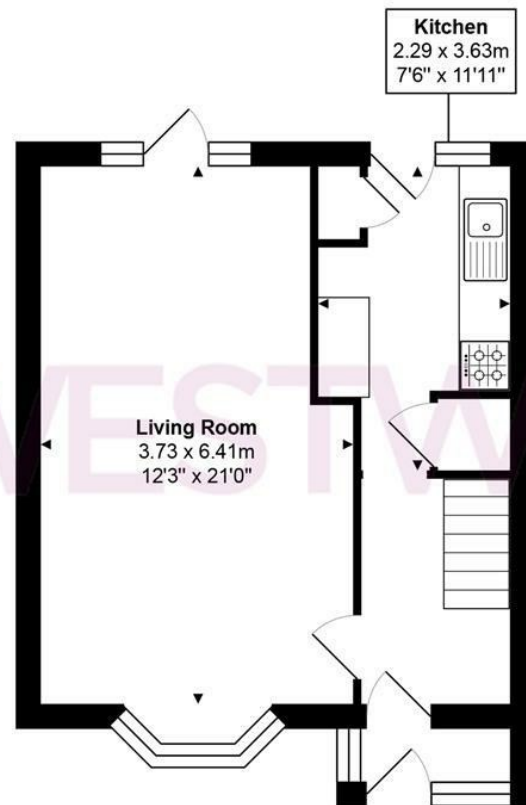
Externally, the home enjoys a private rear garden, offering fantastic potential for landscaping or extension subject to the usual planning permissions. The property also benefits from residents' parking and ample on-street parking available within the close.

Ideally situated, Pengelly Close is just a short distance from Cheshunt and Theobalds Grove Stations, providing excellent transport links into London. The property is also within easy reach of popular local schools including Goffs Academy, local shops, open green spaces, Lea Valley Park and a wide range of transport and road connections via the A10 and M25. We highly recommend an early viewing to appreciate the size, location and fantastic potential that this wonderful family home has to offer!

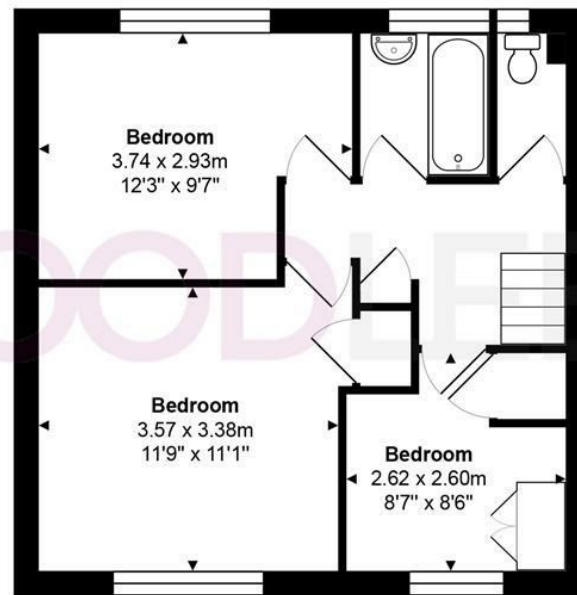


WESTWOODLEBER

WESTWOODLEBER
LET US GUIDE YOU HOME



Ground Floor



First Floor

Total Area: approx. 78.5 m² ... 845 ft²

THE FLOORPLAN IS FOR ILLUSTRATIVE PURPOSES ONLY AND IS NOT TO SCALE.
Measurements and features are approximate and may differ from the actual property. Verify all details independently; no liability is accepted for errors or omissions.

Property marketing provided by www.fotomarketing.co.uk







WESTWOODLEBER



WESTWOODLEBER



WESTWOODLEBER



WESTWOODLEBER